

USER MANUAL

ALKALI WATER IONIZER
S-7000P



Made in Korea



List of contents

If you read and fully understand this user manual, you can use the product safely and efficiently.

1. Cautions for use 3	5. How to change a filter 13
1-1. Cautions for drinking.....3	5-1. When to replace the filter 13
1-2. Cautions for installation.....3	5-2. How to replace the filter 14
1-3. Cautions for use.....4	5-3. When to replace the filter 14
1-4. Storage after use.....4	5-4. Filter components..... 14
1-5. Cautions for electric power 4	
1-6. Cautions for electric power 4	
2. Part names and functions... 5	6. How to measure pH 15
2-1. Names and functions on the appearance 5	
2-2. Names and functions on the control panel..... 6	
3. Installation of the product.. 7	7. Solutions against problems 15
3-1. Checking the components..... 7	7-1. Flux control..... 15
3-2. Checking any problems of the product 7	7-2. Overload control of the electrolytic cell..... 15
3-3. Understanding before installation .. 7	
3-4. City water pipe connection 8	
3-5. Installation depending on the service place 8	
4. How to use the product 9	8. How to use alkaline water.. 16
4-1. Preparation before use 9	
4-2. Power switch On and operation ... 9	
4-3. Use of alkaline water..... 10	
4-4. Use of purified water..... 11	
4-5. Use of acidic water 12	
4-6. How to stop the operation..... 12	
4-7. How to control water quality 13	
4-8. How to use a volume controller · 13	
	9. Please check before asking after-sales service..... 16
	10. Product specification 18
	Quality and warranty certificate ... 19

This user manual describes the operation and usage of the product for accurate handling. All users should read this user manual carefully before using this device. The product should be used within the range recommended in this user manual.



Something that tells someone about possible death or serious injury, if violated

WARNING



Something that tells possible injury or property damage, if violated

CAUTION

1. Cautions for use



1-1. Cautions for drinking

- (1) When drinking water generated by electrolysis, you should pay attention to the following matters.
- ① Please do not drink medicine together with alkaline water.
 - ② When drinking at first, consult a doctor and start to take a small amount of water within the range close to neutral pH.
 - ③ If you feel discomfort after drinking or do not feel better in abdominal discomfort even after continuous drinking, stop use and consult a doctor.
 - ④ A person who gets medical treatment from doctor, especially has kidney disturbance or any physical problem, should consult a doctor before drinking.
 - ⑤ A renal disease patient with kidney failure or potassium excretion insufficiency should not drink.
 - ⑥ Before drinking alkaline water, use an electrode-type pH meter to check pH values, in the beginning of first drinking and later more than one time every month, if they are within the drinking range
 - ⑦ Throw away initially inflowing alkaline water one time, and immediately drink the following water generated.
 - ⑧ For an optimum amount of drinking, it is recommended to take 500~1,000ml a day.
 - ⑨ Please observe the following matters with respect to the storage of generated water.
 - How to store alkaline water: Alkaline water should be contained in the closed container and kept in the refrigerator (0~5°C).
 - Alkaline water container: polyethylene container, porcelain container, glass container
 - Storage period (hours): 3 days (72 hours)
 - ⑩ Never use hot water.
 - ⑪ Check if the following contents are included in the filter, before use.
 - ▷ Filter type (material):
 - No. 1 Free block carbon filter – PP non-woven fabric, Calcium sulfite, Block carbon
 - No. 2 Complex block carbon filter – PP non-woven fabric, Zeolite, Tourmaline, Block carbon
 - ▷ Country of Origin: Republic of Korea
 - ▷ Manufacturer: SLG Co., Ltd. (Tel. 032-668-9458)
 - ▷ Replacement time: Free Block Carbon Filter – about 6 months
Complex Block Carbon Filter No. 2 – about 12 months
 - ▷ Manufacturing date: printed at the time of manufacture
 - ▷ Effective water purification quantity: Free Block Carbon Filter – 2,800ℓ ,
Complex Block Carbon Filter – 5,600ℓ
 - ⑫ Do not drink acidic water.
 - ⑬ Keep in mind the shelf life (5 years) of an electrolytic cell for use.
- (2) For service environment and conditions, please pay attention to the following matters.
- ① Do not use source water not complying with city water laws.
 - ② Do not use at high temperatures like in the bathroom.
 - ③ Do not use at high humidity or temperatures.
 - ④ Do not use at a place affected by atmosphere, wind, sunlight, salt and air.
 - ⑤ Do not use at a chemical storage warehouse or gas emission site.
 - ⑥ Use at a stable place with no slope.
 - ⑦ Do not use at an area with low water pressure (lower than 1 kgf/cm²) and source water flux (lower than 0.6 ℓ /min)



1-2. Cautions for installation

- (1) Do not use hot water or other water improper for a drink.
- (2) Avoid a place directly contacted with fire.
- (3) Avoid direct sunlight for installation.
- (4) Do not install at a place susceptible to water freezing.
- (5) Do not install at a place where a heavy object is lifted or at an unstable place.
- (6) Do not modify the product arbitrarily.

1. Cautions for use



WARNING

1-3. Cautions for use

- (1) If any problem occurs during use, please refer to checking points before asking after-sales service.
- (2) If any problem occurs, do not disassemble or modify arbitrarily. Otherwise, it may cause product failure or electric shock.
- (3) Do not use hot water. It may cause damage on the electrolytic cell.
- (4) Do not put a dangerous or heavy object on the product during use.
- (5) Ambient environment should be well ventilated.
- (6) In case of no use for a long time, turn off the water tap.



WARNING

1-4. Storage after use

- (1) While moving, be sure to turn off the power.
- (2) Do not let water flow into the main body while cleaning.
- (3) Do not clog the drain, or bend/twist/press the hose.
- (4) In case of no use for a long time, pull out the electric code from the socket.
- (5) Wipe the surface of main body with a soft cloth coated with soap water.



CAUTION

1-5. Cautions for electric power

- If the main body is fallen into water, immediately pull out the plug from the socket and take it out of water.
 - ▷ It may cause electric shock.
- Do not use the power exceeding the rated one for the socket or wiring apparatus, nor use other than AC 220V.
 - ▷ If octopus-like wiring exceeds the rated power, it may cause fire due to heating.
- Do not insert or pull out the plug with a wet hand.
 - ▷ It may cause electric shock.
- Push the electric plug to the end of the socket.
 - ▷ If plugging into the socket is unstable, it may cause electric shock or fire due to heating.
 - ▷ Do not use a failed plug or loose socket.
- When taking out the electric plug, do not pull or force the code line but hold the electric plug to take out.



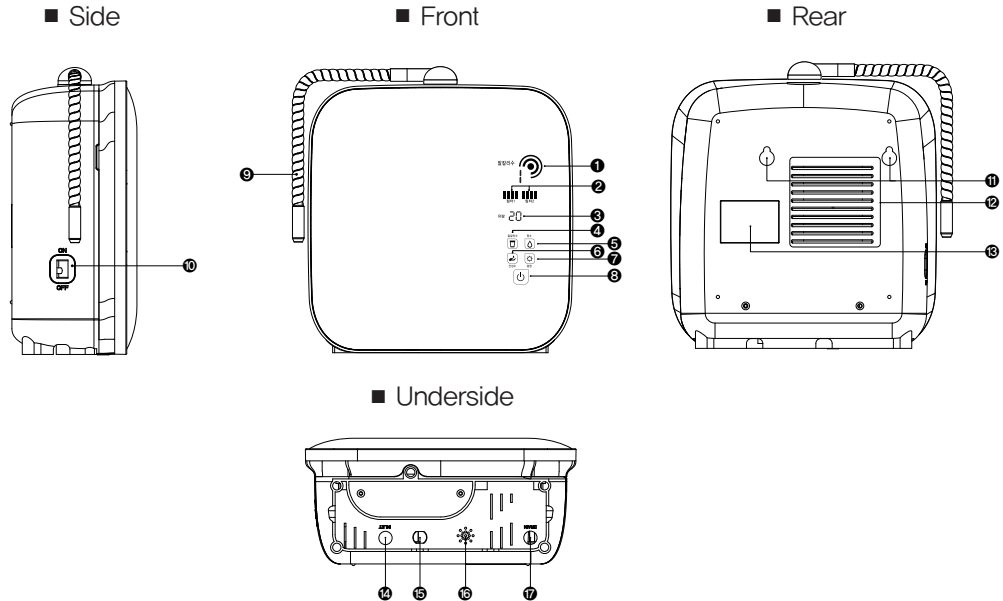
CAUTION

1-6. Cautions for electric power

- Never place the measuring indicator near fire
 - ※ As indicator is inflammable, it may cause fire.
- Do not use an aluminum container (metal container) weak to alkali or copper container weak to acid to store alkaline water.
 - ▷ Metal container is susceptible to corrosion or easy to lose activation.
- Do not drink ion water or purified water generated long ago (recommended to drink within one day after generation)
- Never drink a measuring agent nor let it touch on eyes or skin.
 - ▷ If drunk mistakenly, vomit and consult a doctor.
 - ▷ If in eyes, wash thoroughly with water and consult a doctor quickly
 - ▷ If on skin, wash with water
 - ▷ After closing the cap, store at a cool place out of reach of children.
- In case of a failure, do not disassemble/assemble arbitrarily. Write down the failure symptom and contact our customer center.
- Never modify the device. (After-sales service may be restricted)
- If you want to re-use the device not having used for a long time, be sure to check if the device works normally and contact our customer center for inspection and re-use.

2. Part names and functions

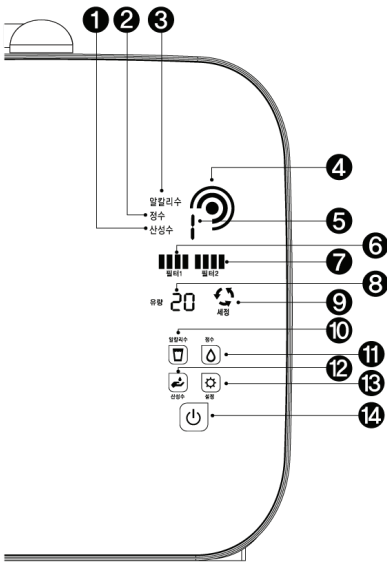
2-1. Names and functions on the appearance



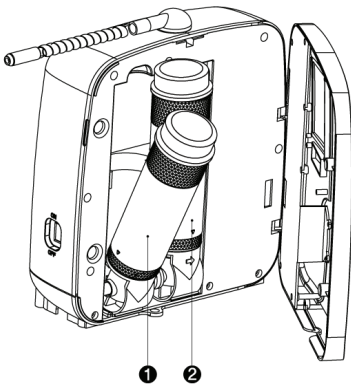
Part	No.	Name	Function
Front	1	Display	Display window of the selected function
	2	Filter 1,2 icon	Notification of filter replacement
	3	Setting icon	Indication of water quality, voice, and filter setting
	4	Alkaline water button	Alkaline select button
	5	Water purification button	Water purification select button
	6	Acidic water button	Acidic water select button
	7	Setting button	Water quality, voice, and filter setting
	8	Start/Stop button	Start/Stop button of each function
Side	9	Water nozzle	Water nozzle for alkaline water, purified water, and acidic water
Rear	10	Power switch	Power On/Off switch
	11	Wall hanging hole	A hole to install on the wall
	12	Radiation grill	Heat release hole generating from the product
Underside	13	Product sticker	Indication of Product specification
	14	Water inlet hose connection (source water)	A holder for water inlet connection
	15	Power line	A holder to fix the power line
	16	Speaker hole	Voice information speaker hole
	17	Drain hose connection (acidic water)	A holder for drain hose connection

2. Part names and functions

2-2. Names and functions on the control panel



No.	Name	Function
1	Acidic water indicator	Indication when acidic water is selected
2	Purified water indicator	Indication when purified water is selected
3	Alkaline water indicator	Indication when alkaline water is indicated
4	Operation indicator	After starting, it lightens sequentially and indicates operation state.
5	Step indicator	Step indication of alkaline and acidic water
6	Filter No.1 indicator	Indication of effective purification quantity of the filter
7	Filter No. 2 indicator	Indication of effective purification quantity of the filter
8	Water quality/Flux/Voice setting indicator	Indication of the set water quality/flux/voice of the product
9	Automatic cleaning indicator	Indication of automatic cleaning operation
10	Alkaline water button	Alkaline water setting button
11	Purified water button	Purified water setting button
12	Acidic water button	Acidic water setting button
13	Setting button	Used to set water quality/flux/voice of the product
14	Start/Stop button	Used to start/stop the product




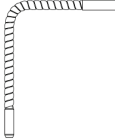
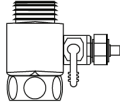
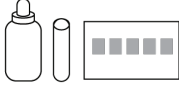
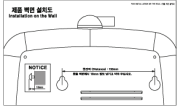
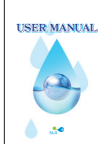
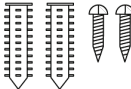


Internal structure (front)

No.	Name	Function
1	Free Block Carbon Filter	Complex filter comprising PP non-woven fabric, Calcium sulfite, and Block carbon
2	Complex Block Carbon Filter	Complex filter comprising PP non-woven fabric, Zeolite, Tourmaline, and Block carbon

3. Installation of the product

3-1. Checking the components

Remove the packing of the product and check if all components are included described in the user manual. If all components are not included, please contact your distributor.

				
	Water nozzle	Source water adaptor	pH indicator	Installation drawing for wall hanging
				
	User manual	Wall hanging nails	Source water inlet hose	Acidic water drain hose

※ Pipe connection parts may differ from the above pictures.

3-2. Checking any problems of the product

If you have removed the packing of the product and have checked the presence of all components, the check if there are any problems of the product and components.

If any problems of the product are found, please contact your distributor.



3-3. Understanding before installation

The instructions described hereunder are to prevent unexpected danger or damage in ad advance, which should be understood to install the product safely and correctly.

- (1) This product is for AC 220V.
- (2) Be sure to turn off source water from the tap before installation.
- (3) Check if it is cold or hot water, be sure to connect it to the value for cold water.
- (4) Install on the flat floor.
- (5) After installation. Release source water and check any leak.
- (6) Avoid the vicinity of magnetic materials.
- (7) Install in the well ventilated place.
- (8) Install in the place convenient for source water supply and drainage.
- (9) Dust filter should be installed between source water adaptor and product.



3. Installation of the product

3-4. City water pipe connection

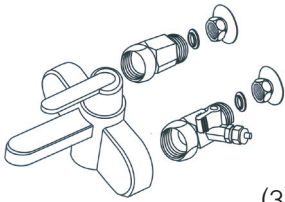
(1) Kind of service adaptor

The adaptor connected to the water tap or source water pipe differs as the kind of pipe. Basic type included in the product when purchasing, may not fit to the city water pipe at the installation place, but the consumer, if he want to install personally, he can replace it with the proper adaptor from the distributor he have purchased the product.

(2) How to connect a wall mounting water tap – cold and hot water separation type

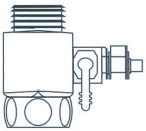
1. As shown in the picture, lock the control adaptor with the rubber packing.
2. Separate the water tap and water pipe attached to the wall, and insert the control adaptor between the separated water tap and water pipe. Then connect the height-adjustable adaptor together to meet the balance of city water piping.

※ Use cold water only for source water.



(3) City water pipe connection for the sink

1. Pierce a hole (diameter: 8 mm) in the proper place on the upper side of the sink and connect as shown in the picture.
2. Connect the control adaptor to the cold water pipe as shown in the box on the right side of the picture.
3. Connect the connected pipe and the tube (1/4") included in the product.



(4) Things in common to be checked (compulsory reading)

1. After connecting all pipes, check for a leak.
2. Turn the source water adaptor valve by hand to control water release to the proper amount (not to indicate flux control)
3. In case of no use for a long time, turn off the valve of source water adaptor.

3-5. Installation depending on the service place

In case of using it on the sink or sink support

1. Put the product on the suitable position.
2. Connect source water hose to water inlet and adaptor connection, and turn it firmly with a tool not to fall out.

Insert a hose into the acidic water drain hose to drain water into the sink drainer.

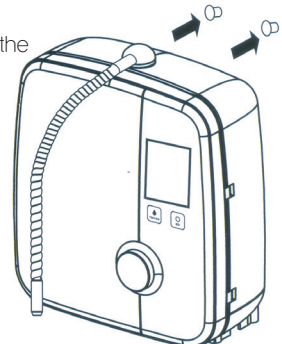
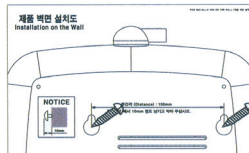
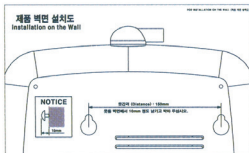
If acidic water drain hose is too long to be immersed into the drainer, contaminated water may inflow.

If acidic water hose is installed higher than the product or connected too long, automatic drain function may not work while stopping the operation.

Install the product so that acidic water hose is not pressed by it.

In case of using the product on the wall

1. Wet the installation drawing, and adhere it to the wall in parallel.
2. Hit the nail on the nail position. (Leave 1 cm of the nail head)
3. Install the product so that the wall hanging hole at the rear of the product is hung on the nail.



4. How to use the product

4-1. Preparation before use

- ① Read carefully the user manual.
- ② Connect the source adaptor to the cold water line.
- ③ Install the product at a stable place not to be fallen down.
- ④ Connect the water outlet of source water adaptor and the water inlet of the product to the embedded water inlet hose.
- ⑤ After connecting the hose to the drain of the product, locate it to the drainer of the sink.



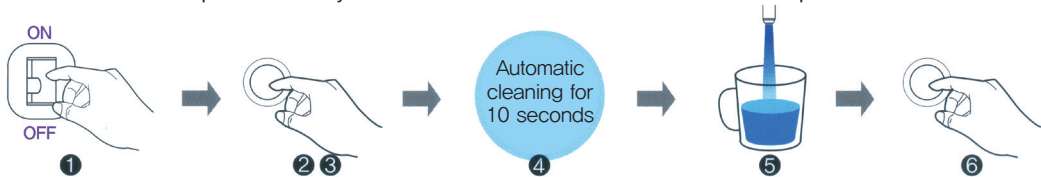
CAUTION

※ If the drain hose is at the bottom of drainer, as contaminated water may inflow, please use it as short as possible.

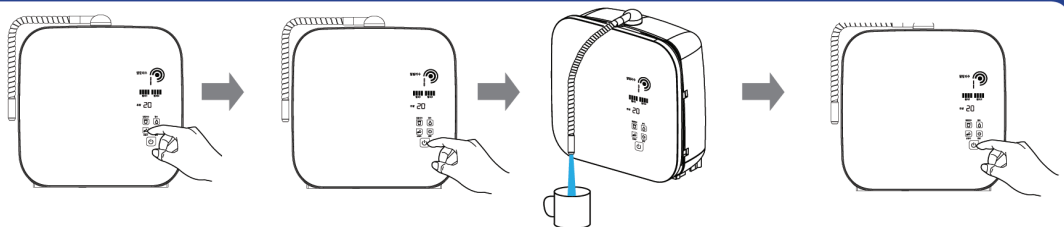
- ⑥ Connect the water nozzle to the drain at the upper of the product.
- ⑦ Control the direction of the water nozzle to have the generated water released to the desired position.
- ⑧ Check the voltage of the power and connect the power cord to the socket.
- ⑨ If installation is completed, release source water and check for a leak.
- ⑩ After turning off the power switch as the side of the product, press the start/stop button to operate the product and release water sufficiently for 2~3 minutes.

4-2. Power switch On and operation

- ① Turn on the power on/off switch of the product.
- ② LED display lights as a whole and becomes converted into standby state.
- ③ Press the Start/Stop button.
- ④ As voice message “Under automatic cleaning” and melody come out, automatic cleaning indicator, acidic water indicator, step indicator (5 steps), and operation indication light in sequence (cleaning time: 10 seconds).
- ⑤ If cleaning for 10 seconds is completed, voice message, “Alkaline ionized water is coming out,” comes out, and alkaline water flows out from the water nozzle. (Alkaline water indicator lights, and step indicator of step 1 lights)
- ⑥ When shipping out from the factory, alkaline water step 1 is selected as the basic value. However, the product remembers the last production step during use and that step in memory is set as the basic value in the next operation.



How to use the product (common to alkaline water/purified water/acidic water)



① Touch the beverage to drink and select the next step. (Whenever touching, it changes from 1 to 2, 3, 4, and 5.)

② Press the Start/Stop button.

③ Voice message “Alkaline (purified, acid) water is coming out” comes out, and alkaline (purified, acid) water flows out from the water nozzle.

④ If you want to stop, press the start/stop button to stop alkaline water release.

4. How to use the product

4-3. Use of alkaline water

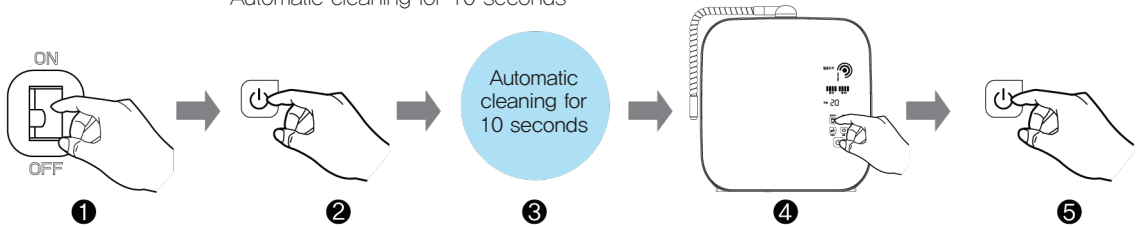


Do not drink when taking medicine.

CAUTION

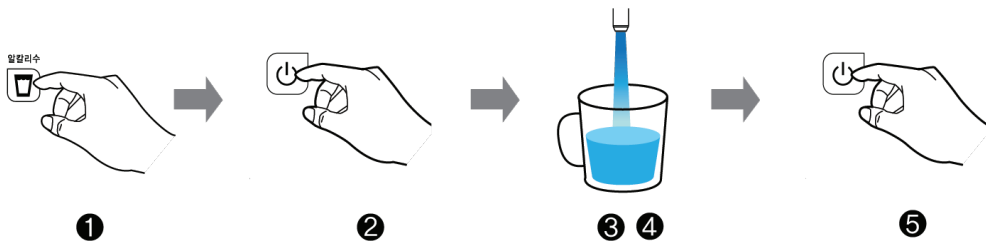
(1) How to use alkaline water in case of power on

- ① Connect the power cord to the socket and turn on the power on/off switch.
- ② Press the start/stop button to let water into the product.
- ③ After automatic cleaning for about 10 seconds, alkaline water of step 1 flows out.
- ④ Press the alkaline water button to select the desired step.
- ⑤ If you want to stop, press the start/stop button to stop the release of alkaline water.
Automatic cleaning for 10 seconds



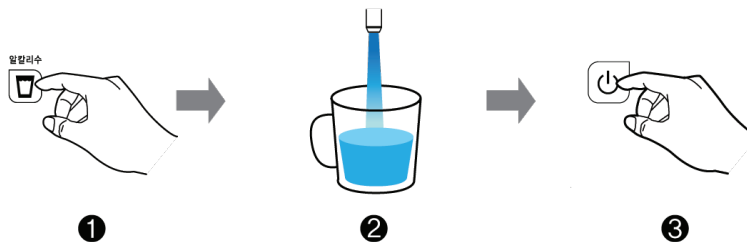
(2) How to use alkaline water during standby

- ① Press the alkaline water button to select the desired step (ex. 4 steps)
- ② Press the start/stop button.
- ③ Voice message, "Alkaline ionized water is coming out" , comes out, and alkaline water flows out from the water nozzle.
- ④ Drink the released alkaline water.
- ⑤ If you want to stop, press the start/stop button to stop the release of alkaline water.



(3) How to use alkaline water in operation

- ① Press the alkaline water button to select the desired step (ex. 4 steps)
- ② Voice message, "Alkaline ionized water is coming out" , comes out, and alkaline water flows out from the water nozzle.
- ③ If you want to stop, press the start/stop button.



4. How to use the product

(4) Steps of alkaline water

※ The above values may differ depending on water quality and water pressure.

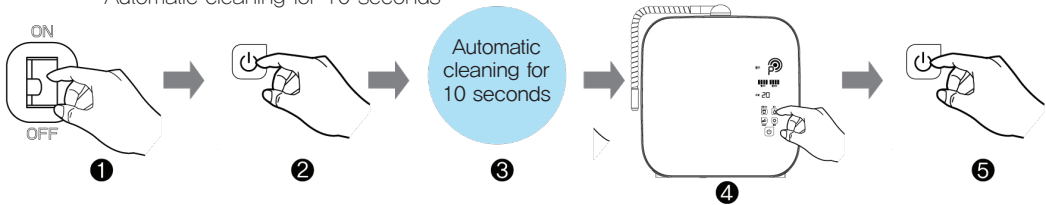
Steps of alkaline water	pH by step
Step 1 of Alkaline water	Alkaline water pH 8.0 ± 0.5
Step 2 of Alkaline water	Alkaline water pH 8.5 ± 0.5
Step 3 of Alkaline water	Alkaline water pH 9.0 ± 0.5
Step 4 of Alkaline water	Alkaline water pH 9.5 ± 0.5
Step 5 of Alkaline water	Alkaline water pH 9.8 ± 0.5

4-4. Use of purified water

※ Drink when you take medicine.

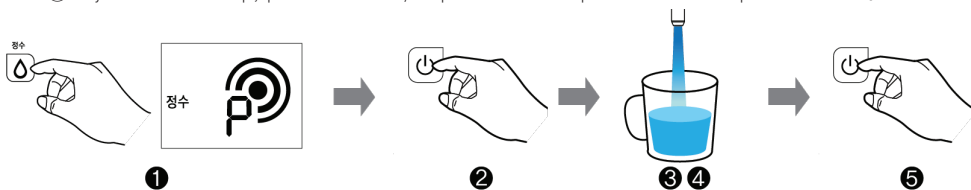
(1) How to use purified water in case of switch on

- ① Connect the power cord to the socket and turn on the power on/off switch.
 - ② Press the start/stop button to let water into the product.
 - ③ Automatic cleaning is in progress for about 10 seconds.
 - ④ After completing automatic cleaning, press the start/stop button to select the purified water.
 - ⑤ If you want to stop, press the start/stop button to stop the release of purified water.
- Automatic cleaning for 10 seconds



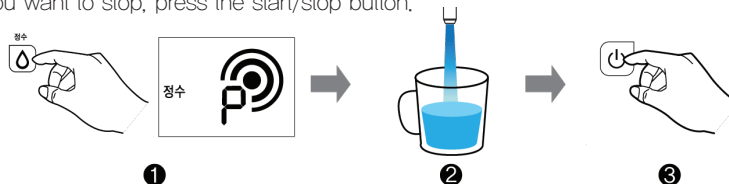
(2) How to use purified water during standby

- ① Press the purified water button to indicate purified water on LED indicating window.
- ② Press the start/stop button.
- ③ Voice message, "Purified water is coming out", comes out, and purified water flows out from the water nozzle.
- ④ Drink the released purified water.
- ⑤ If you want to stop, press the start/stop button to stop the release of purified water.



(3) How to use purified water in operation

- ① Press the purified water button.
- ② Voice message, "Purified water is coming out", comes out, and purified water flows out from the water nozzle.
(However, if pressing the purified water button during the use of alkaline water, voice message, "Wait for a moment," comes out, and in 10 seconds, purified water flows out together with voice message, "Purified water is coming out.")
- ③ If you want to stop, press the start/stop button.



4. How to use the product

4-5 Use of acidic water

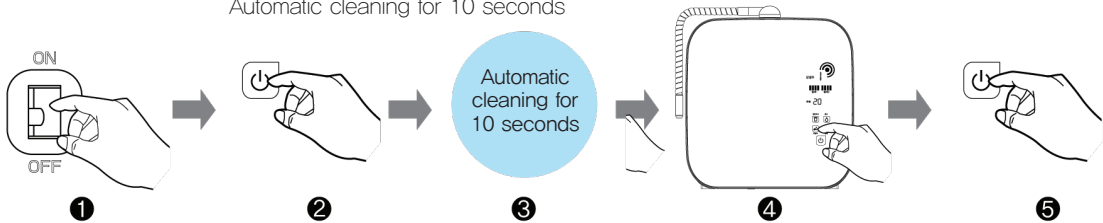


Never drink

WARNING

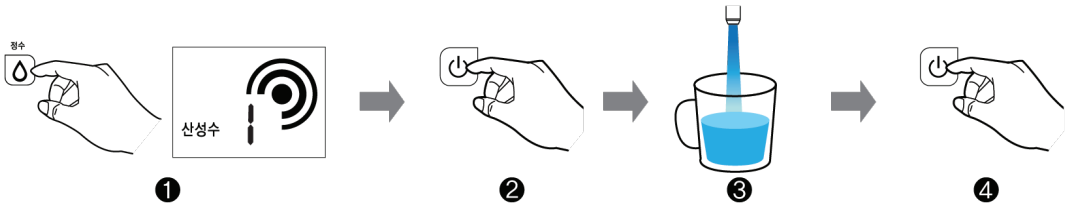
(1) How to use acidic water in case of power on

- ① Connect the power cord to the socket and turn on the power on/off switch.
- ② Press the start/stop button to start automatic cleaning.
- ③ After automatic cleaning for about 10 seconds, voice message, "Alkaline ionized water is coming out, : comes out, and alkaline water flows out.
- ④ After completing automatic cleaning, press the acidic water button to select the desired step.
- ⑤ Press the start/stop button to stop the release of acidic water.
Automatic cleaning for 10 seconds



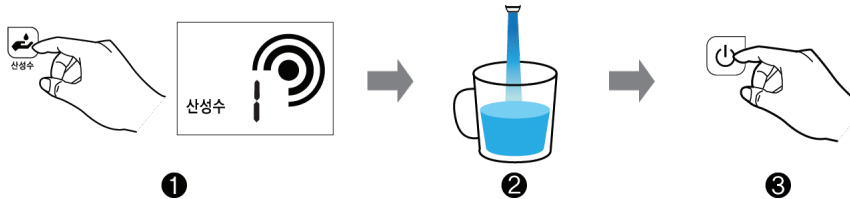
(2) How to use acidic water during standby

- ① Press the acidic water button to select the desired step.
- ② Press the start/stop button.
- ③ Voice message, "Acidic water is coming out" , comes out, and acidic water flows out from the water nozzle.
- ④ If you want to stop, press the start/stop button to stop the release of acidic water.

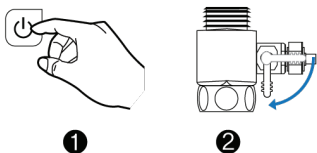


(3) How to use acidic water in operation

- ① Press the acidic water button to select the desired step.
- ② Voice message, "Acidic water is coming out" , comes out, and acidic water flows out from the water nozzle.
- ③ If you want to stop, press the start/stop button again.



4-6 How to stop



- ① If you want to stop, press the start/stop button.
- ② In case of a long absence, please turn off the source water supply valve for safety.

5. How to replace the filter

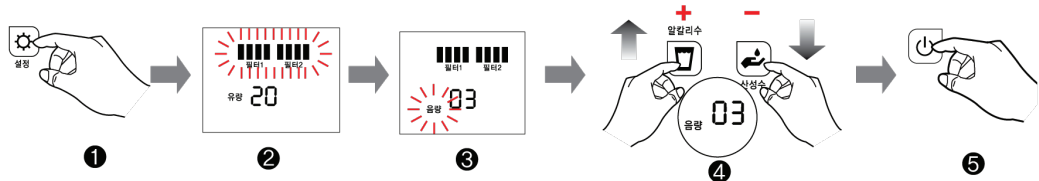
4-7 How to control water quality

- ① If pressing the setting valve for 5 seconds during standby, voice message, "Setting mode," comes out while filter indicator blinks. If pressing the setting button again, water quality indicator blinks.
- ② If pressing the alkaline water button, the step goes up. If pressing the acidic water button, the step goes down (controllable to 1~30).
- ③ After setting water quality, if pressing the start/stop button, voice message, "Water quality Setting completed," comes out, and water quality setting is completed.



4-8 How to control the volume

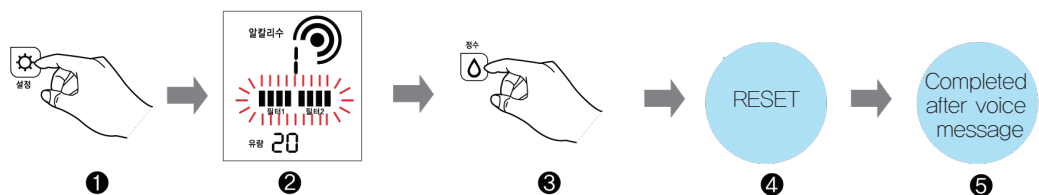
- ① Press the setting button for 5 seconds during standby.
- ② Filter indicator in the LED indicating window blinks.
- ③ If pressing the setting button once again, water quality indicator blinks. If pressing one more again, volume indicator blinks.
- ④ If pressing the alkaline water button, the step goes up. If pressing the acidic water button, the step goes down (controllable to 00~05; 00: mute).
- ⑤ After setting the volume, if pressing the start/stop button, voice message, "Volume setting completed," and volume setting is completed.



5. How to replace the filter

5-1 Filter replacement time

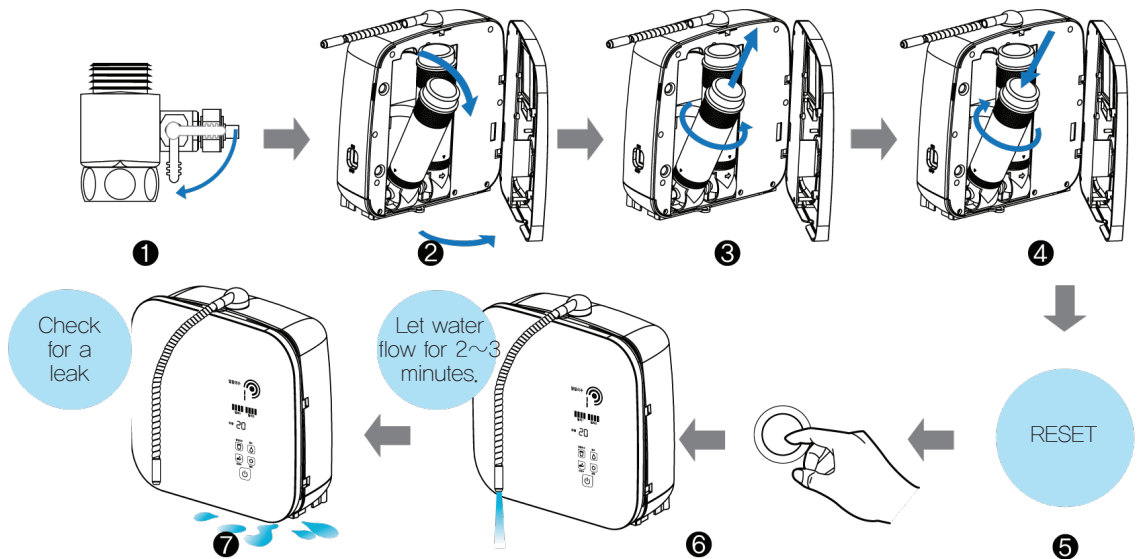
- ① Press the setting button for 5 seconds during standby.
- ② Filter indicator in the LED indicating window blinks.
(When replacing Filter No. 1, Filter 1 blinks. When replacing Filter No. 1 & 2, Filter 1 & 2 blink together)
– Setting mode rotation: Filter → Water quality → Volume → Filter (Automatic rotation according to replacement time)
- ③ When replacing Filter No. 1, if pressing the purified button while Filter 1 blinks, reset is done.
When replacing Filter No. 1 & 2, if pressing the purified button while Filter 1 & 2 blink, reset is done.
If pressing the start/stop button, voice message, "Filter replacement completed," comes out.



5. How to replace the filter

5-2. How to replace the filter

- ① Turn off the valve of the source water adaptor.
- ② Pull the front cover to open.
- ③ Hold the upper side of the filter to be replaced, pull it forward, and turn it counterclockwise to separate the filter from the filter adaptor.
- ④ Put the new filter into the filter adaptor, and turn clockwise to fix to the filter adaptor.
- ⑤ Reset the replaced filter to initialize. (Refer to 5.1 Filter replacement time)
- ⑥ Press the start/stop button to let water flow for about 2~3 minutes.
- ⑦ Check for a leak.



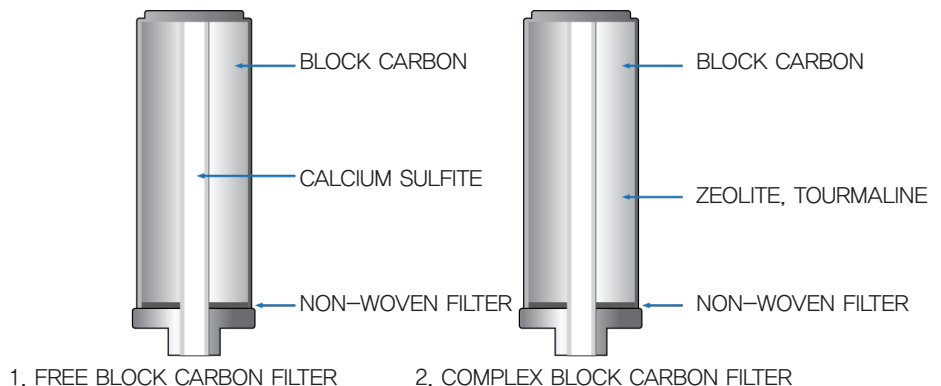
5-3 Filter replacement period

This ion generator consists of two kinds of filter.

- (1) Free Block Carbon Filter: about 6 months (2,800L)
- (2) Complex Block Carbon Filter: about 12 months (5,600L)

※ Filter life may differ according to the product installation area or source water quality.

5-4 Components of the filter





6. How to measure pH /7. Solutions against problems

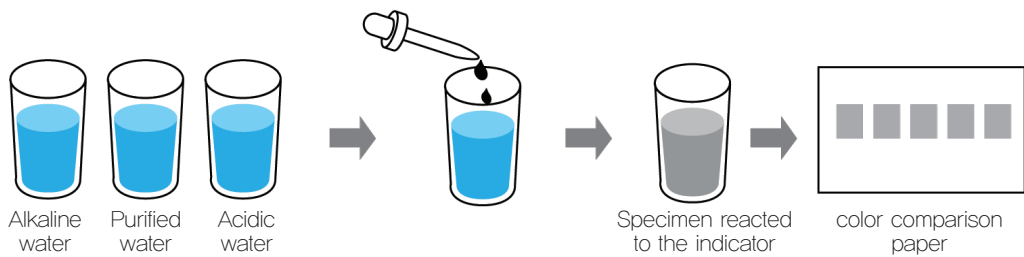
6. How to measure pH

- (1) pH: Strength of alkali and acid of Alkaline ionized water, purified water, and acid ionized water
- (2) Fill the transparent containers up to 2/3 separately with alkaline, purified, and acidic water to be measured, and fall 3~5 drops of pH indicator, and compare with the color of standard color comparison paper.

※ pH value differs a little with water quality and water pressure



- You should not drink water having been used for pH test.
- Please keep pH indicators at a cold, dark place.
- Avoid a place in reach of children or near fire
- If your eye or mouth is stained with pH measuring indicator, immediately rinse with water.



7. Solutions against problems

7-1 Flux control

- (1) Flux control: When source water flux is less or more than standard flux, flux sensor detects and voice message "Control the flux," comes out.
- (2) Control the flux with a water tap or adaptor valve until the flux control lamp and voice message stop.

Symptom	Operation state
0 liter	Operation stop
0~0,6 liter/min or less	Water release and flux control message out
0,6~4,0 liter/min	Normal operation

7-2 Overload control of the electrolytic cell

If overcurrent flows in the electrolytic cell, E appears on the LED indicating window and the product stops. In this case, lower the water quality setting for use.



8. How to use alkaline water / 9. Please check before asking after-sales service

8. How to use alkaline water.

8.1 How to drink alkaline water by step

		Alkaline water				Alkaline water	
First user	Child	Step 1		Normal users	Child	Step 1~2	
	Adult	Step 1			Adult	Step 2~4	
	Patient	Step 1			Patient	Step 2~5	
	How to drink	Serving per day: 2~3 cups					

※ How to drink alkaline water

When drinking first, drink 2~3 cups of Alkaline water of Step 1 a day. If no problem occurs in the body, it is recommended to raise the step for drinking.

9. Please check before asking after-sales service

Problems	Checking points	Solutions
No power	Connecting state of the power code	Check the power code and connect again.
	Failure cause not identified	Turn off the power and water tap, and ask after-sales service.
Sudden power off during use	Check power connection and water quality setting state.	If water quality is incorrectly selected or the product is used for a long time, the operation is temporarily stopped by a safety device to protect the product. If temperature decreases, it starts to operate. Don't worry.
Leak occurs.	Too much flux and high water pressure	Control the water tap or adaptor valve.
	Too little flux and low water pressure	Control the water tap or adaptor valve.
	If source water inlet hose is bent	Spread the bent part.
	If filter is choked (Even though filtering time is not out, instant inflow of contaminated water may cause this phenomenon)	Replace the filter.
Water smells bad.	If filter life is up (Filter life may extremely be shortened in the bad water quality area)	Replace the filter.
	Sudden change of water quality or high chlorine in the city water in summer	Use alkaline water of Step 1~2.



9. Please check before asking after-sales service

Problems	Checking points	Solutions
After filling the bottle with alkaline water, precipitates occur at the bottom of bottle.	If carbonic acid is rich in source water, and calcium carbonate is precipitated by combining it with calcium of ion water	Be assured that it is harmless to human body in spite of visually unpleasant appearance. Lower alkaline water to Step 1~2 for use.
Water does not flow from the acid water outlet.	Check if water outlet hose is bent.	Increase the flux of source water and spread the bent part.
Leak occurs	Too much leak like flowing water	Turn off the power and source valve, and contact our customer service center.
	Leakage from filter connection	Insert the O-ring of the filter connection correctly ※ Contact our customer service center.
Some or the whole lamps in the indicating window are out.	Some indicating lamps are out.	LED PCB failed. ※ Contact our customer service center.
	The whole indicating lamps are out.	LED PCB failed. ※ Contact our customer service center.
Melody or voice message does not come out.	Please check if volume control is deleted.	Turn off the power and source valve, and contact our customer service center.
pH concentration of acid water is same as that of neutral color.	It has been not long since filter replacement.	It could be for about one week after filter replacement, Try again after several days.
	If you want to use underground water as source water	※ Contact our customer service center.
pH concentration of alkaline water is same as that of neutral color.	If carbon acid is rich in water or underground water is used	It resulted from the evaporation of indicator ingredients due to chemical reaction of free carbon dioxide in the water. Adjust water quality selection higher and fall 3~4 drops of indicator into cup for use.
Others	Cause not identified	※ Contact our customer service center.



10. Product specification

Product name		Alkaline ion water generator
Type name		
Manufacturer name and address		SLG Co., Ltd. 1526, Chungwon-ro, Pyungtaek-ro, Gyunggi-do
Manufacturer permit no.		No. 4663
Item permit no.		Permit no. 14-1580
Purpose of use		This device is to generate alkaline ion water of pH 8.5~10.0 by electrolyzing drink water. Drinking alkaline ion water of hydrogen ion concentration (pH 9.5), helps improve gastrointestinal symptoms (clinical Diarrhea, indigestion, abnormal fermentation in the stomach, hyperacidity).
Rated voltage and rated frequency		AC 220V, 60 HZ
Protection type and degree against the rated power		Class 2 device, B type device
Maximum power consumption		450VA
Outside dimensions		300 mm(W) x 135 mm(D) x 325 mm(H)
Product weight		3.7 kg
Permissible water pressure, water temperature		1.0~5.0 kg/cm ² , 5°C~30°C
Control type, Operating method		One touch type, City water open/close type
Electrolytic device	Electrolytic type, cleaning type	Continuous electrolysis, automatic cleaning
	Electrolytic steps	5 steps of alkaline water, 5 steps of acid water (30 steps of water quality selection modes)
	Electrode material	Platinum plated titanium
Purification device	Filter replacement type	카트리지 방식
	Effective purification quantity	No. 1 Free Block Carbon Filter: about 6 months (2,800L)
		No. 2 Free Block Carbon Filter: about 6 months (5,600L)
	Filter components	No. 1 Free Block Carbon Filter: PP non-woven cloth, Calcium sulfite, Block carbon
No. 2 Free Block Carbon Filter: PP non-woven fabric, Zeolite, Tourmaline, Block carbon		
Over-heat protection device		Protective circuit embedded
Water supply type		Direct connection to the city water



QUALITY AND WARRANTY CERTIFICATE

QUALITY AND WARRANTY CERTIFICATE

Product name	Alkaline ion water generator	Type	
Manufacturing no.		Purchase no.	
Customer name		TEL	
Customer address			
Sales agent		TEL	
Belonging to	Branch name _____ – Distributor _____		

1. The product has been approved by KFSA through strict test. We will repair any failure in its performances and functions having occurred within warranty period free of charge. If repair is not available, we will replace the failed product.
2. In the following cases, we will repair at a cost regardless of warranty period.
 - (1) Performance defects and failures if quality warranty period is passed.
 - (2) Damages occurred by consumer intentionally or negligently
 - (3) Failures resulted from the repair not by our service center or distributor
 - (4) If product life is out (as far as such things are included in the user manual)
 - (5) Failures or defects due to force majeure
 - (6) If this certificate is lost

Thank You





List of contents

If you read and fully understand this user manual, you can use the product safely and efficiently.

1. Cautions for use 3	5. How to change a filter 13
1-1. Cautions for drinking..... 3	5-1. When to replace the filter 13
1-2. Cautions for installation..... 3	5-2. How to replace the filter 14
1-3. Cautions for use 4	5-3. When to replace the filter 14
1-4. Storage after use..... 4	5-4. Filter components..... 14
1-5. Cautions for electric power 4	
1-6. Cautions for electric power 4	
2. Part names and functions... 5	6. How to measure pH 15
2-1. Names and functions on the appearance 5	
2-2. Names and functions on the control panel..... 6	
3. Installation of the product.. 7	7. Solutions against problems 15
3-1. Checking the components..... 7	7-1. Flux control..... 15
3-2. Checking any problems of the product 7	7-2. Overload control of the electrolytic cell..... 15
3-3. Understanding before installation .. 7	
3-4. City water pipe connection 8	
3-5. Installation depending on the service place 8	
4. How to use the product 9	8. How to use alkaline water.. 16
4-1. Preparation before use 9	
4-2. Power switch On and operation ... 9	
4-3. Use of alkaline water..... 10	
4-4. Use of purified water..... 11	
4-5. Use of acidic water 12	
4-6. How to stop the operation..... 12	
4-7. How to control water quality 13	
4-8. How to use a volume controller · 13	
	9. Please check before asking after-sales service..... 16
	10. Product specification 18
	Quality and warranty certificate ... 19

This user manual describes the operation and usage of the product for accurate handling. All users should read this user manual carefully before using this device. The product should be used within the range recommended in this user manual.



Something that tells someone about possible death or serious injury, if violated

WARNING



Something that tells possible injury or property damage, if violated

CAUTION

1. Cautions for use



1-1. Cautions for drinking

- (1) When drinking water generated by electrolysis, you should pay attention to the following matters.
- ① Please do not drink medicine together with alkaline water.
 - ② When drinking at first, consult a doctor and start to take a small amount of water within the range close to neutral pH.
 - ③ If you feel discomfort after drinking or do not feel better in abdominal discomfort even after continuous drinking, stop use and consult a doctor.
 - ④ A person who gets medical treatment from doctor, especially has kidney disturbance or any physical problem, should consult a doctor before drinking.
 - ⑤ A renal disease patient with kidney failure or potassium excretion insufficiency should not drink.
 - ⑥ Before drinking alkaline water, use an electrode-type pH meter to check pH values, in the beginning of first drinking and later more than one time every month, if they are within the drinking range
 - ⑦ Throw away initially inflowing alkaline water one time, and immediately drink the following water generated.
 - ⑧ For an optimum amount of drinking, it is recommended to take 500~1,000ml a day.
 - ⑨ Please observe the following matters with respect to the storage of generated water.
 - How to store alkaline water: Alkaline water should be contained in the closed container and kept in the refrigerator (0~5°C).
 - Alkaline water container: polyethylene container, porcelain container, glass container
 - Storage period (hours): 3 days (72 hours)
 - ⑩ Never use hot water.
 - ⑪ Check if the following contents are included in the filter, before use.
 - ▷ Filter type (material):
 - No. 1 Free block carbon filter – PP non-woven fabric, Calcium sulfite, Block carbon
 - No. 2 Complex block carbon filter – PP non-woven fabric, Zeolite, Tourmaline, Block carbon
 - ▷ Country of Origin: Republic of Korea
 - ▷ Manufacturer: SLG Co., Ltd. (Tel. 032-668-9458)
 - ▷ Replacement time: Free Block Carbon Filter – about 6 months
Complex Block Carbon Filter No. 2 – about 12 months
 - ▷ Manufacturing date: printed at the time of manufacture
 - ▷ Effective water purification quantity: Free Block Carbon Filter – 2,800ℓ ,
Complex Block Carbon Filter – 5,600ℓ
 - ⑫ Do not drink acidic water.
 - ⑬ Keep in mind the shelf life (5 years) of an electrolytic cell for use.
- (2) For service environment and conditions, please pay attention to the following matters.
- ① Do not use source water not complying with city water laws.
 - ② Do not use at high temperatures like in the bathroom.
 - ③ Do not use at high humidity or temperatures.
 - ④ Do not use at a place affected by atmosphere, wind, sunlight, salt and air.
 - ⑤ Do not use at a chemical storage warehouse or gas emission site.
 - ⑥ Use at a stable place with no slope.
 - ⑦ Do not use at an area with low water pressure (lower than 1 kgf/cm²) and source water flux (lower than 0.6 ℓ /min)



1-2. Cautions for installation

- (1) Do not use hot water or other water improper for a drink.
- (2) Avoid a place directly contacted with fire.
- (3) Avoid direct sunlight for installation.
- (4) Do not install at a place susceptible to water freezing.
- (5) Do not install at a place where a heavy object is lifted or at an unstable place.
- (6) Do not modify the product arbitrarily.

1. Cautions for use



1-3. Cautions for use

- (1) If any problem occurs during use, please refer to checking points before asking after-sales service.
- (2) If any problem occurs, do not disassemble or modify arbitrarily. Otherwise, it may cause product failure or electric shock.
- (3) Do not use hot water. It may cause damage on the electrolytic cell.
- (4) Do not put a dangerous or heavy object on the product during use.
- (5) Ambient environment should be well ventilated.
- (6) In case of no use for a long time, turn off the water tap.



1-4. Storage after use

- (1) While moving, be sure to turn off the power.
- (2) Do not let water flow into the main body while cleaning.
- (3) Do not clog the drain, or bend/twist/press the hose.
- (4) In case of no use for a long time, pull out the electric code from the socket.
- (5) Wipe the surface of main body with a soft cloth coated with soap water.



1-5. Cautions for electric power

- If the main body is fallen into water, immediately pull out the plug from the socket and take it out of water.
 - ▷ It may cause electric shock.
- Do not use the power exceeding the rated one for the socket or wiring apparatus, nor use other than AC 220V.
 - ▷ If octopus-like wiring exceeds the rated power, it may cause fire due to heating.
- Do not insert or pull out the plug with a wet hand.
 - ▷ It may cause electric shock.
- Push the electric plug to the end of the socket.
 - ▷ If plugging into the socket is unstable, it may cause electric shock or fire due to heating.
 - ▷ Do not use a failed plug or loose socket.
- When taking out the electric plug, do not pull or force the code line but hold the electric plug to take out.

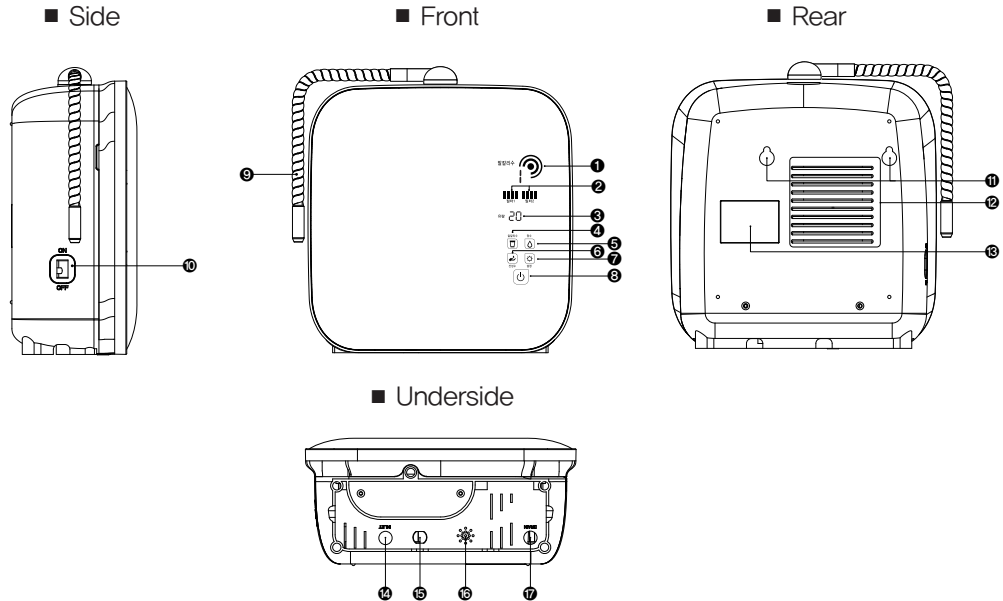


1-6. Cautions for electric power

- Never place the measuring indicator near fire
 - ※ As indicator is inflammable, it may cause fire.
- Do not use an aluminum container (metal container) weak to alkali or copper container weak to acid to store alkaline water.
 - ▷ Metal container is susceptible to corrosion or easy to lose activation.
- Do not drink ion water or purified water generated long ago (recommended to drink within one day after generation)
- Never drink a measuring agent nor let it touch on eyes or skin.
 - ▷ If drunk mistakenly, vomit and consult a doctor.
 - ▷ If in eyes, wash thoroughly with water and consult a doctor quickly
 - ▷ If on skin, wash with water
 - ▷ After closing the cap, store at a cool place out of reach of children.
- In case of a failure, do not disassemble/assemble arbitrarily. Write down the failure symptom and contact our customer center.
- Never modify the device. (After-sales service may be restricted)
- If you want to re-use the device not having used for a long time, be sure to check if the device works normally and contact our customer center for inspection and re-use.

2. Part names and functions

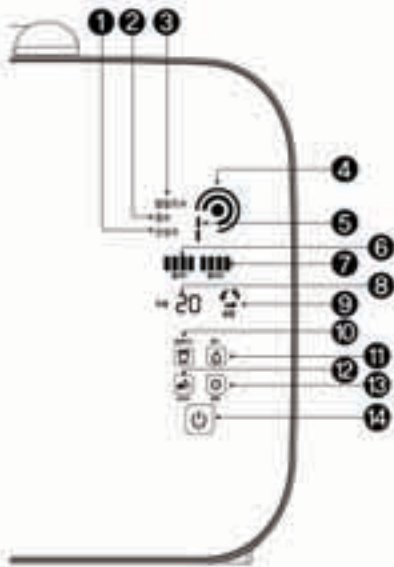
2-1. Names and functions on the appearance



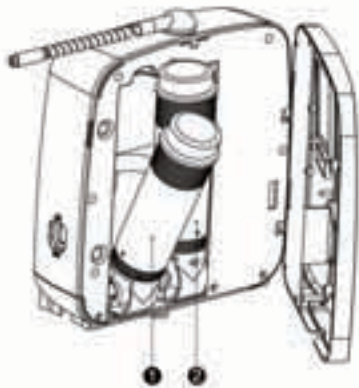
Part	No.	Name	Function
Front	1	Display	Display window of the selected function
	2	Filter 1,2 icon	Notification of filter replacement
	3	Setting icon	Indication of water quality, voice, and filter setting
	4	Alkaline water button	Alkaline select button
	5	Water purification button	Water purification select button
	6	Acidic water button	Acidic water select button
	7	Setting button	Water quality, voice, and filter setting
	8	Start/Stop button	Start/Stop button of each function
Side	9	Water nozzle	Water nozzle for alkaline water, purified water, and acidic water
Rear	10	Power switch	Power On/Off switch
	11	Wall hanging hole	A hole to install on the wall
	12	Radiation grill	Heat release hole generating from the product
Underside	13	Product sticker	Indication of Product specification
	14	Water inlet hose connection (source water)	A holder for water inlet connection
	15	Power line	A holder to fix the power line
	16	Speaker hole	Voice information speaker hole
	17	Drain hose connection (acidic water)	A holder for drain hose connection

2. Part names and functions

2-2. Names and functions on the control panel



No.	Name	Function
1	Acidic water indicator	Indication when acidic water is selected
2	Purified water indicator	Indication when purified water is selected
3	Alkaline water indicator	Indication when alkaline water is indicated
4	Operation indicator	After starting, it lightens sequentially and indicates operation state.
5	Step indicator	Step indication of alkaline and acidic water
6	Filter No.1 indicator	Indication of effective purification quantity of the filter
7	Filter No. 2 indicator	Indication of effective purification quantity of the filter
8	Water quality/Flux/Voice setting indicator	Indication of the set water quality/flux/voice of the product
9	Automatic cleaning indicator	Indication of automatic cleaning operation
10	Alkaline water button	Alkaline water setting button
11	Purified water button	Purified water setting button
12	Acidic water button	Acidic water setting button
13	Setting button	Used to set water quality/flux/voice of the product
14	Start/Stop button	Used to start/stop the product








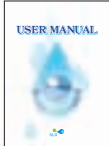



■ Internal structure (front)

No.	Name	Function
1	Free Block Carbon Filter	Complex filter comprising PP non-woven fabric, Calcium sulfite, and Block carbon
2	Complex Block Carbon Filter	Complex filter comprising PP non-woven fabric, Zeolite, Tourmaline, and Block carbon

3. Installation of the product

3-1. Checking the components

Remove the packing of the product and check if all components are included described in the user manual. If all components are not included, please contact your distributor.

				
	Water nozzle	Source water adaptor	pH indicator	Installation drawing for wall hanging
				
Main body	User manual	Wall hanging nails	Source water inlet hose	Acidic water drain hose

※ Pipe connection parts may differ from the above pictures.

3-2. Checking any problems of the product

If you have removed the packing of the product and have checked the presence of all components, the check if there are any problems of the product and components.

If any problems of the product are found, please contact your distributor.



3-3. Understanding before installation

The instructions described hereunder are to prevent unexpected danger or damage in ad advance, which should be understood to install the product safely and correctly.

- (1) This product is for AC 220V.
- (2) Be sure to turn off source water from the tap before installation.
- (3) Check if it is cold or hot water, be sure to connect it to the value for cold water.
- (4) Install on the flat floor.
- (5) After installation. Release source water and check any leak.
- (6) Avoid the vicinity of magnetic materials.
- (7) Install in the well ventilated place.
- (8) Install in the place convenient for source water supply and drainage.
- (9) Dust filter should be installed between source water adaptor and product.



3. Installation of the product

3-4. City water pipe connection

(1) Kind of service adaptor

The adaptor connected to the water tap or source water pipe differs as the kind of pipe. Basic type included in the product when purchasing, may not fit to the city water pipe at the installation place, but the consumer, if he want to install personally, he can replace it with the proper adaptor from the distributor he have purchased the product.

(2) How to connect a wall mounting water tap – cold and hot water separation type

1. As shown in the picture, lock the control adaptor with the rubber packing.
2. Separate the water tap and water pipe attached to the wall, and insert the control adaptor between the separated water tap and water pipe. Then connect the height-adjustable adaptor together to meet the balance of city water piping.

※ Use cold water only for source water.



(3) City water pipe connection for the sink

1. Pierce a hole (diameter: 8 mm) in the proper place on the upper side of the sink and connect as shown in the picture.
2. Connect the control adaptor to the cold water pipe as shown in the box on the right side of the picture.
3. Connect the connected pipe and the tube (1/4") included in the product.



(4) Things in common to be checked (compulsory reading)

1. After connecting all pipes, check for a leak.
2. Turn the source water adaptor valve by hand to control water release to the proper amount (not to indicate flux control)
3. In case of no use for a long time, turn off the valve of source water adaptor.

3-5. Installation depending on the service place

In case of using it on the sink or sink support

1. Put the product on the suitable position.
2. Connect source water hose to water inlet and adaptor connection, and turn it firmly with a tool not to fall out.

Insert a hose into the acidic water drain hose to drain water into the sink drainer.

If acidic water drain hose is too long to be immersed into the drainer, contaminated water may inflow.

If acidic water hose is installed higher than the product or connected too long, automatic drain function may not work while stopping the operation.

Install the product so that acidic water hose is not pressed by it.

In case of using the product on the wall

1. Wet the installation drawing, and adhere it to the wall in parallel.
2. Hit the nail on the nail position. (Leave 1 cm of the nail head)
3. Install the product so that the wall hanging hole at the rear of the product is hung on the nail.



4. How to use the product

4-1. Preparation before use

- ① Read carefully the user manual.
- ② Connect the source adaptor to the cold water line.
- ③ Install the product at a stable place not to be fallen down.
- ④ Connect the water outlet of source water adaptor and the water inlet of the product to the embedded water inlet hose.
- ⑤ After connecting the hose to the drain of the product, locate it to the drainer of the sink.



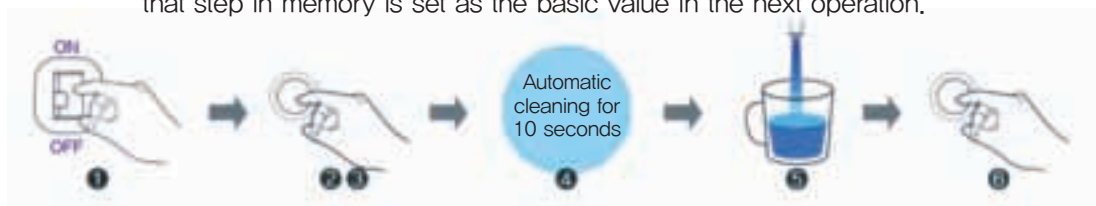
※ If the drain hose is at the bottom of drainer, as contaminated water may inflow, please use it as short as possible.

CAUTION

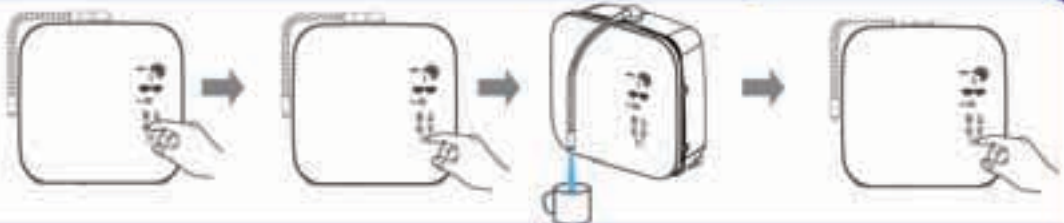
- ⑥ Connect the water nozzle to the drain at the upper of the product.
- ⑦ Control the direction of the water nozzle to have the generated water released to the desired position.
- ⑧ Check the voltage of the power and connect the power code to the socket.
- ⑨ If installation is completed, release source water and check for a leak.
- ⑩ After turning off the power switch as the side of the product, press the start/stop button to operate the product and release water sufficiently for 2~3 minutes.

4-2. Power switch On and operation

- ① Turn on the power on/off switch of the product.
- ② LED display lights as a whole and becomes converted into standby state.
- ③ Press the Start/Stop button.
- ④ As voice message “Under automatic cleaning” and melody come out, automatic cleaning indicator, acidic water indicator, step indicator (5 steps), and operation indication light in sequence (cleaning time: 10 seconds).
- ⑤ If cleaning for 10 seconds is completed, voice message, “Alkaline ionized water is coming out,” comes out, and alkaline water flows out from the water nozzle. (Alkaline water indicator lights, and step indicator of step 1 lights)
- ⑥ When shipping out from the factory, alkaline water step 1 is selected as the basic value. However, the product remembers the last production step during use and that step in memory is set as the basic value in the next operation.



How to use the product (common to alkaline water/purified water/acidic water)



① Touch the beverage to drink and select the next step. (Whenever touching, it changes from 1 to 2, 3, 4, and 5.)

② Press the Start/Stop button.

③ Voice message “Alkaline (purified, acid) water is coming out” comes out, and alkaline (purified, acid) water flows out from the water nozzle.

④ If you want to stop, press the start/stop button to stop alkaline water release.

4. How to use the product

4-3. Use of alkaline water

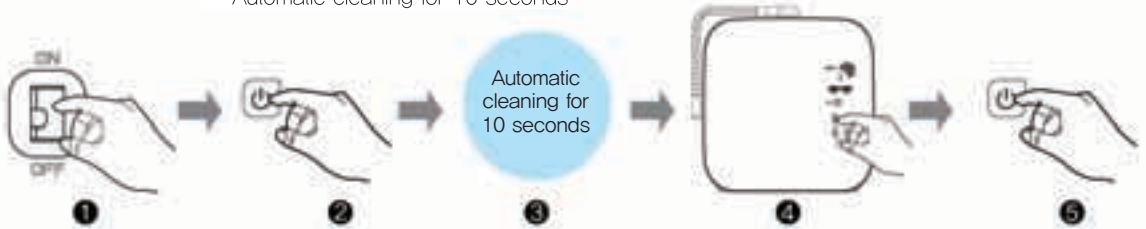


Do not drink when taking medicine.

CAUTION

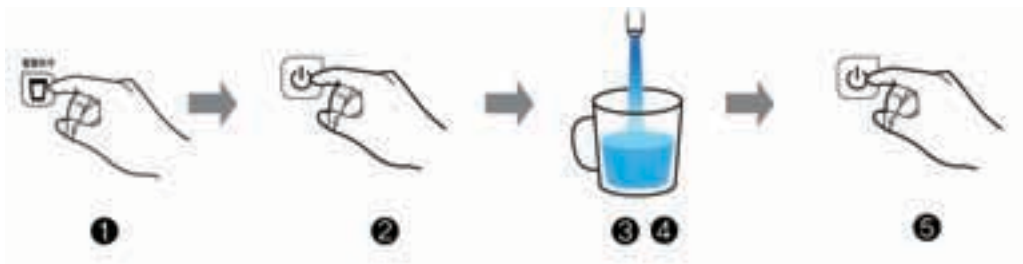
(1) How to use alkaline water in case of power on

- ① Connect the power cord to the socket and turn on the power on/off switch.
- ② Press the start/stop button to let water into the product.
- ③ After automatic cleaning for about 10 seconds, alkaline water of step 1 flows out.
- ④ Press the alkaline water button to select the desired step.
- ⑤ If you want to stop, press the start/stop button to stop the release of alkaline water.
Automatic cleaning for 10 seconds



(2) How to use alkaline water during standby

- ① Press the alkaline water button to select the desired step (ex. 4 steps)
- ② Press the start/stop button.
- ③ Voice message, "Alkaline ionized water is coming out", comes out, and alkaline water flows out from the water nozzle.
- ④ Drink the released alkaline water.
- ⑤ If you want to stop, press the start/stop button to stop the release of alkaline water.



(3) How to use alkaline water in operation

- ① Press the alkaline water button to select the desired step (ex. 4 steps)
- ② Voice message, "Alkaline ionized water is coming out", comes out, and alkaline water flows out from the water nozzle.
- ③ If you want to stop, press the start/stop button.



4. How to use the product

(4) Steps of alkaline water

※ The above values may differ depending on water quality and water pressure.

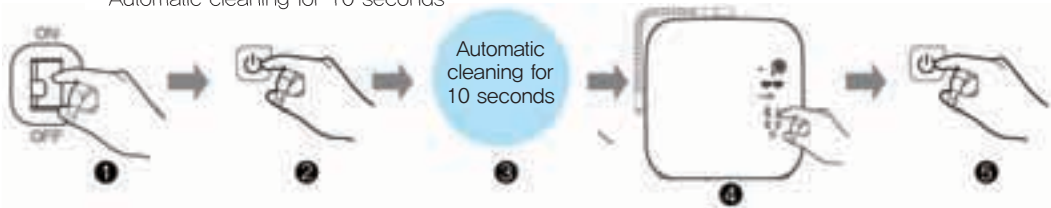
Steps of alkaline water	pH by step
Step 1 of Alkaline water	Alkaline water pH 8.0 ± 0.5
Step 2 of Alkaline water	Alkaline water pH 8.5 ± 0.5
Step 3 of Alkaline water	Alkaline water pH 9.0 ± 0.5
Step 4 of Alkaline water	Alkaline water pH 9.5 ± 0.5
Step 5 of Alkaline water	Alkaline water pH 9.8 ± 0.5

4-4. Use of purified water

※ Drink when you take medicine.

(1) How to use purified water in case of switch on

- ① Connect the power cord to the socket and turn on the power on/off switch.
 - ② Press the start/stop button to let water into the product.
 - ③ Automatic cleaning is in progress for about 10 seconds.
 - ④ After completing automatic cleaning, press the start/stop button to select the purified water.
 - ⑤ If you want to stop, press the start/stop button to stop the release of purified water.
- Automatic cleaning for 10 seconds



(2) How to use purified water during standby

- ① Press the purified water button to indicate purified water on LED indicating window.
- ② Press the start/stop button.
- ③ Voice message, "Purified water is coming out", comes out, and purified water flows out from the water nozzle.
- ④ Drink the released purified water.
- ⑤ If you want to stop, press the start/stop button to stop the release of purified water.



(3) How to use purified water in operation

- ① Press the purified water button.
- ② Voice message, "Purified water is coming out", comes out, and purified water flows out from the water nozzle.
(However, if pressing the purified water button during the use of alkaline water, voice message, "Wait for a moment," comes out, and in 10 seconds, purified water flows out together with voice message, "Purified water is coming out.")
- ③ If you want to stop, press the start/stop button.



4. How to use the product



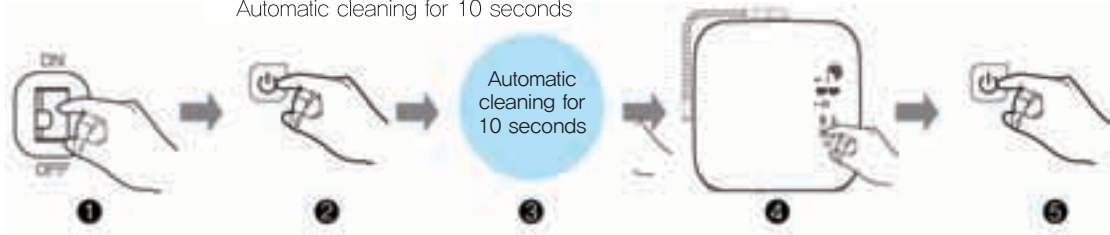
4-5 Use of acidic water

Never drink

WARNING

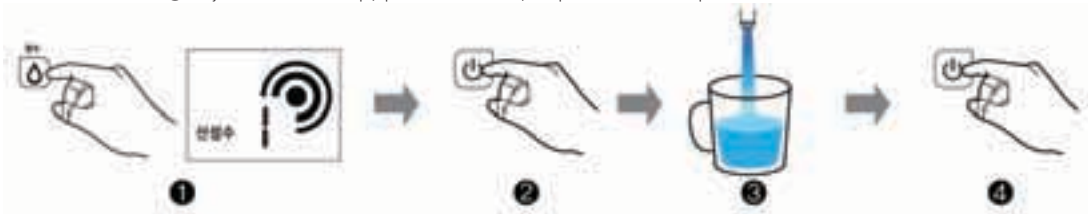
(1) How to use acidic water in case of power on

- ① Connect the power cord to the socket and turn on the power on/off switch.
- ② Press the start/stop button to start automatic cleaning.
- ③ After automatic cleaning for about 10 seconds, voice message, "Alkaline ionized water is coming out, : comes out, and alkaline water flows out.
- ④ After completing automatic cleaning, press the acidic water button to select the desired step.
- ⑤ Press the start/stop button to stop the release of acidic water.
Automatic cleaning for 10 seconds



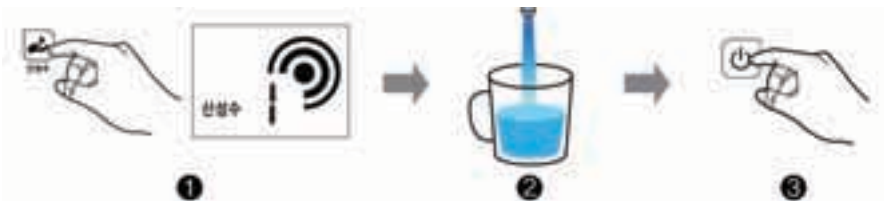
(2) How to use acidic water during standby

- ① Press the acidic water button to select the desired step.
- ② Press the start/stop button.
- ③ Voice message, "Acidic water is coming out", comes out, and acidic water flows out from the water nozzle.
- ④ If you want to stop, press the start/stop button to stop the release of acidic water.

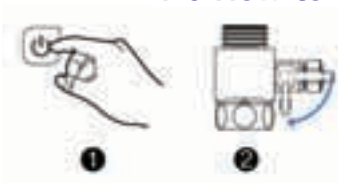


(3) How to use acidic water in operation

- ① Press the acidic water button to select the desired step.
- ② Voice message, "Acidic water is coming out", comes out, and acidic water flows out from the water nozzle.
- ③ If you want to stop, press the start/stop button again.



4-6 How to stop



- ① If you want to stop, press the start/stop button.
- ② In case of a long absence, please turn off the source water supply valve for safety.

5. How to replace the filter

4-7 How to control water quality

- ① If pressing the setting valve for 5 seconds during standby, voice message, "Setting mode," comes out while filter indicator blinks. If pressing the setting button again, water quality indicator blinks.
- ② If pressing the alkaline water button, the step goes up. If pressing the acidic water button, the step goes down (controllable to 1~30).
- ③ After setting water quality, if pressing the start/stop button, voice message, "Water quality Setting completed," comes out, and water quality setting is completed.



4-8 How to control the volume

- ① Press the setting button for 5 seconds during standby.
- ② Filter indicator in the LED indicating window blinks.
- ③ If pressing the setting button once again, water quality indicator blinks. If pressing one more again, volume indicator blinks.
- ④ If pressing the alkaline water button, the step goes up. If pressing the acidic water button, the step goes down (controllable to 00~05; 00: mute).
- ⑤ After setting the volume, if pressing the start/stop button, voice message, "Volume setting completed," and volume setting is completed.



5. How to replace the filter

5-1 Filter replacement time

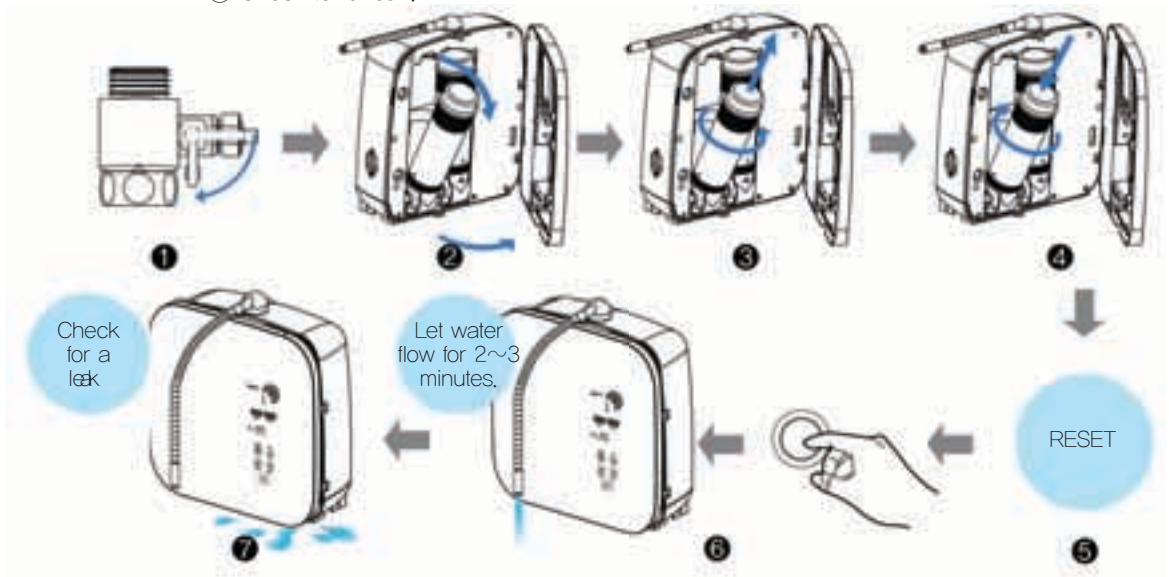
- ① Press the setting button for 5 seconds during standby.
- ② Filter indicator in the LED indicating window blinks.
(When replacing Filter No. 1, Filter 1 blinks. When replacing Filter No. 1 & 2, Filter 1 & 2 blink together)
– Setting mode rotation: Filter → Water quality → Volume → Filter (Automatic rotation according to replacement time)
- ③ When replacing Filter No. 1, if pressing the purified button while Filter 1 blinks, reset is done.
When replacing Filter No. 1 & 2, if pressing the purified button while Filter 1 & 2 blink, reset is done.
If pressing the start/stop button, voice message, "Filter replacement completed," comes out.



5. How to replace the filter

5-2. How to replace the filter

- ① Turn off the valve of the source water adaptor.
- ② Pull the front cover to open.
- ③ Hold the upper side of the filter to be replaced, pull it forward, and turn it counterclockwise to separate the filter from the filter adaptor.
- ④ Put the new filter into the filter adaptor, and turn clockwise to fix to the filter adaptor.
- ⑤ Reset the replaced filter to initialize. (Refer to 5.1 Filter replacement time)
- ⑥ Press the start/stop button to let water flow for about 2~3 minutes.
- ⑦ Check for a leak.



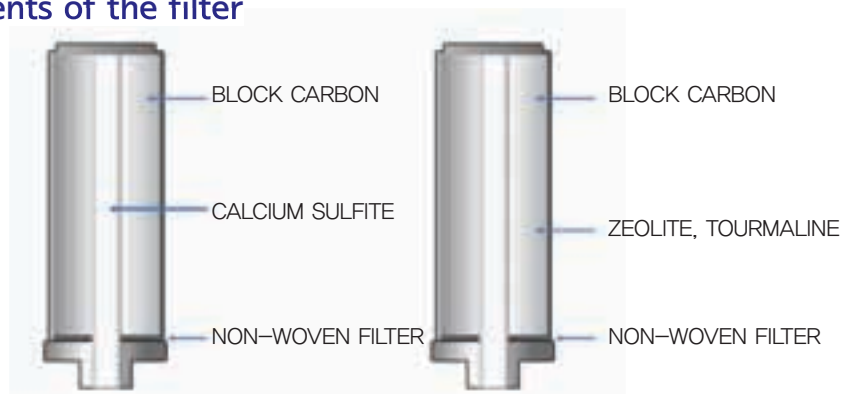
5-3 Filter replacement period

This ion generator consists of two kinds of filter.

- (1) Free Block Carbon Filter: about 6 months (2,800L)
- (2) Complex Block Carbon Filter: about 12 months (5,600L)

※ Filter life may differ according to the product installation area or source water quality.

5-4 Components of the filter



1. FREE BLOCK CARBON FILTER

2. COMPLEX BLOCK CARBON FILTER



6. How to measure pH /7. Solutions against problems

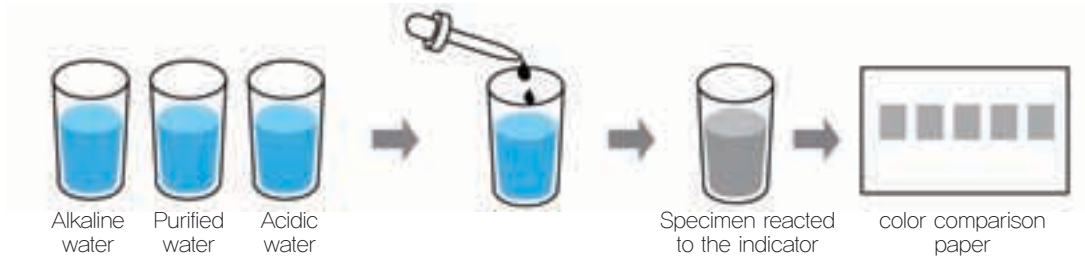
6. How to measure pH

- (1) pH: Strength of alkali and acid of Alkaline ionized water, purified water, and acid ionized water
- (2) Fill the transparent containers up to 2/3 separately with alkaline, purified, and acidic water to be measured, and fall 3~5 drops of pH indicator, and compare with the color of standard color comparison paper.

※ pH value differs a little with water quality and water pressure



- You should not drink water having been used for pH test.
- Please keep pH indicators at a cold, dark place.
- Avoid a place in reach of children or near fire
- If your eye or mouth is stained with pH measuring indicator, immediately rinse with water.



7. Solutions against problems

7-1 Flux control

- (1) Flux control: When source water flux is less or more than standard flux, flux sensor detects and voice message "Control the flux," comes out.
- (2) Control the flux with a water tap or adaptor valve until the flux control lamp and voice message stop.

Symptom	Operation state
0 liter	Operation stop
0~0,6 liter/min or less	Water release and flux control message out
0,6~4,0 liter/min	Normal operation

7-2 Overload control of the electrolytic cell

If overcurrent flows in the electrolytic cell, E appears on the LED indicating window and the product stops. In this case, lower the water quality setting for use.



8. How to use alkaline water / 9. Please check before asking after-sales service

8. How to use alkaline water.

8.1 How to drink alkaline water by step

		Alkaline water		Alkaline water	
First user	Child	Step 1	Normal users	Child	Step 1~2
	Adult	Step 1		Adult	Step 2~4
	Patient	Step 1		Patient	Step 2~5
	How to drink	Serving per day: 2~3 cups			

※ How to drink alkaline water

When drinking first, drink 2~3 cups of Alkaline water of Step 1 a day. If no problem occurs in the body, it is recommended to raise the step for drinking.

9. Please check before asking after-sales service

Problems	Checking points	Solutions
No power	Connecting state of the power code	Check the power code and connect again.
	Failure cause not identified	Turn off the power and water tap, and ask after-sales service.
Sudden power off during use	Check power connection and water quality setting state.	If water quality is incorrectly selected or the product is used for a long time, the operation is temporarily stopped by a safety device to protect the product. If temperature decreases, it starts to operate. Don't worry.
Leak occurs.	Too much flux and high water pressure	Control the water tap or adaptor valve.
	Too little flux and low water pressure	Control the water tap or adaptor valve.
	If source water inlet hose is bent	Spread the bent part.
	If filter is choked (Even though filtering time is not out, instant inflow of contaminated water may cause this phenomenon)	Replace the filter.
Water smells bad.	If filter life is up (Filter life may extremely be shortened in the bad water quality area)	Replace the filter.
	Sudden change of water quality or high chlorine in the city water in summer	Use alkaline water of Step 1~2.



9. Please check before asking after-sales service

Problems	Checking points	Solutions
After filling the bottle with alkaline water, precipitates occur at the bottom of bottle.	If carbonic acid is rich in source water, and calcium carbonate is precipitated by combining it with calcium of ion water	Be assured that it is harmless to human body in spite of visually unpleasant appearance. Lower alkaline water to Step 1~2 for use.
Water does not flow from the acid water outlet.	Check if water outlet hose is bent.	Increase the flux of source water and spread the bent part.
Leak occurs	Too much leak like flowing water	Turn off the power and source valve, and contact our customer service center.
	Leakage from filter connection	Insert the O-ring of the filter connection correctly ※ Contact our customer service center.
Some or the whole lamps in the indicating window are out.	Some indicating lamps are out.	LED PCB failed. ※ Contact our customer service center.
	The whole indicating lamps are out.	LED PCB failed. ※ Contact our customer service center.
Melody or voice message does not come out.	Please check if volume control is deleted.	Turn off the power and source valve, and contact our customer service center.
pH concentration of acid water is same as that of neutral color.	It has been not long since filter replacement.	It could be for about one week after filter replacement, Try again after several days.
	If you want to use underground water as source water	※ Contact our customer service center.
pH concentration of alkaline water is same as that of neutral color.	If carbon acid is rich in water or underground water is used	It resulted from the evaporation of indicator ingredients due to chemical reaction of free carbon dioxide in the water. Adjust water quality selection higher and fall 3~4 drops of indicator into cup for use.
Others	Cause not identified	※ Contact our customer service center.



10. Product specification

Product name		Alkaline ion water generator
Type name		
Manufacturer name and address		SLG Co., Ltd. 1526, Chungwon-ro, Pyungtaek-ro, Gyunggi-do
Manufacturer permit no.		No. 4663
Item permit no.		Permit no. 14-1580
Purpose of use		This device is to generate alkaline ion water of pH 8.5~10.0 by electrolyzing drink water. Drinking alkaline ion water of hydrogen ion concentration (pH 9.5), helps improve gastrointestinal symptoms (clinical Diarrhea, indigestion, abnormal fermentation in the stomach, hyperacidity).
Rated voltage and rated frequency		AC 220V, 60 HZ
Protection type and degree against the rated power		Class 2 device, B type device
Maximum power consumption		450VA
Outside dimensions		300 mm(W) x 135 mm(D) x 325 mm(H)
Product weight		3.7 kg
Permissible water pressure, water temperature		1.0~5.0 kg/cm ² , 5°C~30°C
Control type, Operating method		One touch type, City water open/close type
Electrolytic device	Electrolytic type, cleaning type	Continuous electrolysis, automatic cleaning
	Electrolytic steps	5 steps of alkaline water, 5 steps of acid water (30 steps of water quality selection modes)
	Electrode material	Platinum plated titanium
Purification device	Filter replacement type	카트리지 방식
	Effective purification quantity	No. 1 Free Block Carbon Filter: about 6 months (2,800L)
		No. 2 Free Block Carbon Filter: about 6 months (5,600L)
	Filter components	No. 1 Free Block Carbon Filter: PP non-woven cloth, Calcium sulfite, Block carbon
No. 2 Free Block Carbon Filter: PP non-woven fabric, Zeolite, Tourmaline, Block carbon		
Over-heat protection device		Protective circuit embedded
Water supply type		Direct connection to the city water

QUALITY AND WARRANTY CERTIFICATE

QUALITY AND WARRANTY CERTIFICATE

Product name	Alkaline ion water generator	Type	
Manufacturing no.		Purchase no.	
Customer name		TEL	
Customer address			
Sales agent		TEL	
Belonging to	Branch name _____ – Distributor _____		

1. The product has been approved by KFSA through strict test. We will repair any failure in its performances and functions having occurred within warranty period free of charge. If repair is not available, we will replace the failed product.

2. In the following cases, we will repair at a cost regardless of warranty period.
 - (1) Performance defects and failures if quality warranty period is passed.
 - (2) Damages occurred by consumer intentionally or negligently
 - (3) Failures resulted from the repair not by our service center or distributor
 - (4) If product life is out (as far as such things are included in the user manual)
 - (5) Failures or defects due to force majeure
 - (6) If this certificate is lost

Thank You

